



www.jeffreygross.co.uk

CARDIFF

VALE

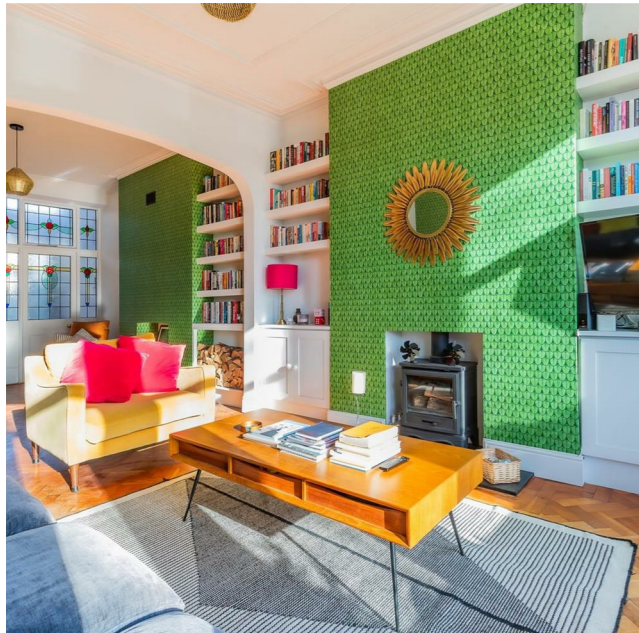
CAERPHILLY

BRISTOL



Kimberley Road

PENYLAN



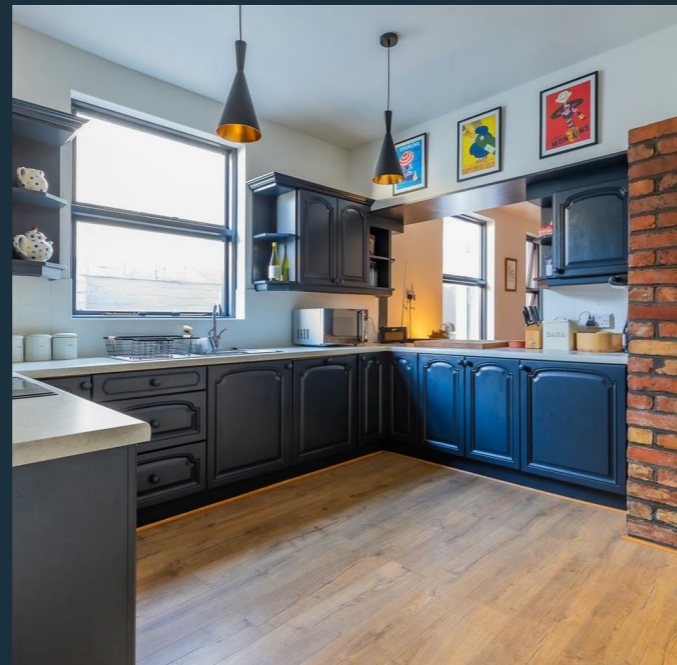
A great size period home on a super street

Comments by Mr Ramzy Bancroft



Property Specialist
Mr Ramzy Bancroft
 Branch manager

Ramzy@jeffreycross.co.uk



Comments by the Homeowner



Kimberley Road

Penylan, Cardiff, CF23 5DL

Offers Over

£575,000



4 Bedroom(s)



1 Bathroom(s)



1818.00 sq ft



Contact our
Penylan Branch

02920 499680

OFFERS OVER £575,000

Located on the ever popular Kimberley road in the heart of Penylan, is this stunning terrace house. Offering a perfect blend of space, features and comfort for family living. With an impressive 1,818 square feet of flexible living space, this property boasts a period entrance hall with original tiled floor, through lounge sitting room with wood floors and fireplaces, stunning dining room, fitted kitchen, utility area and ground floor WC. Upstairs there are four generously sized bedrooms, landing, bathroom and handy loft room.

The location is particularly appealing, set in a lovely neighbourhood that combines the tranquillity of suburban life with convenient access to local amenities, parks and Cardiff centre, as well as within popular school catchment, making this a super family home.



CARDIFF

VALE

CAERPHILLY

BRISTOL

www.jeffreygross.co.uk



Hall	Loft room
Lounge	
Sitting room	Garden
Dining room	School Catchment Marlborough Primary School Cardiff High School
Kitchen	Ysgol Y Berllan Deg Ysgol Gyfun Gymraeg Bro Edern
Utility Room & WC	*Subject to availability*
Landing	Council Tax Band G
Bedroom 1	Tenure Freehold - To be confirmed by your legal representative
Bedroom 2	
Bedroom 3	
Bathroom	
Bedroom 4	





Energy Efficiency Rating		Current	Potential
Very energy efficient - lower running costs			
(92 plus) A			
(81-91) B			
(69-80) C			76
(55-68) D			
(39-54) E		44	
(21-38) F			
(1-20) G			
Not energy efficient - higher running costs			
England & Wales		EU Directive 2002/91/EC	

